

## Specialisation (TTWA)

Source: BRES (2011)

Specialisation	Employees	LQ
Renting and operating of own or leased real estate	1,400	2.2
Technical testing and analysis	300	1.9
Renting and leasing of construction and civil engineering machinery and equipment	200	1.5
Real Estate agencies	600	1.5
Legal activities	1,400	1.4
Private security activities	800	1.3
Other postal and courier activities	300	1.3
General cleaning of buildings	1,500	1.2
Development of building projects	200	1.2

NB Location Quotient (LQ) compares share of employment in Plymouth TTWA to the GB average. Figures above suggest specialisation in the local economy.

## › Plymouth Chamber of Commerce and Industry

› The Chamber is the leading independent business representative group in Plymouth whose fundamental purpose is to improve the environment for doing business in Plymouth and the South West Peninsula

› The Chamber works in three major spheres of influence from which your business can benefit;

1. In the macro economics and business community of Plymouth and surrounding regions

2. Helping you build your business through a structured (but non compulsory) programme of networking and business events

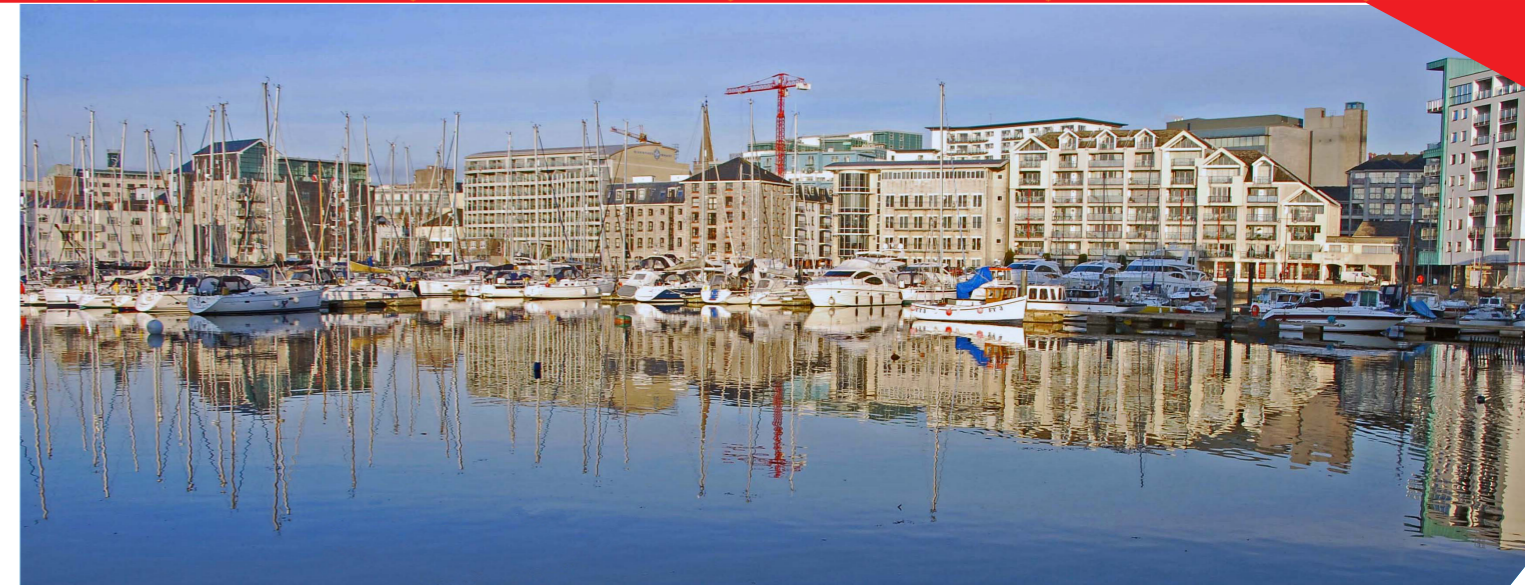
3. By being the source and conduit of crucial business information and intelligence

## Specialist Companies

Bond Pearce	Foot Anstey
Pricewaterhouse Coopers	HM Land Registry
Devon Chambers	KPMG
Nash & Co Solicitors	Wolferstans LLP
Bishop Fleming	Vickery Holman

## The Federation of Small Businesses (FSB)

- › Non-profit making and non-party political organisation
- › The Federation of Small Businesses is the UK's largest campaigning pressure group promoting and protecting the interests of the self-employed and owners of small firms
- › Formed in 1974, it now has 200,000 members across 33 regions and 194 branches

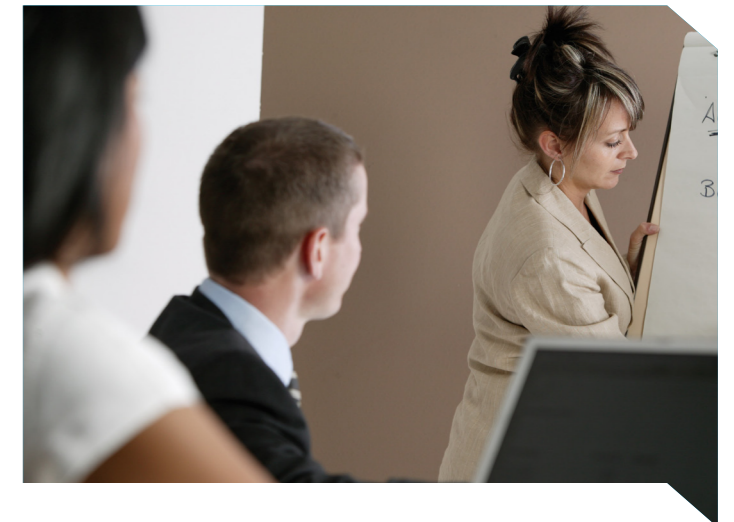


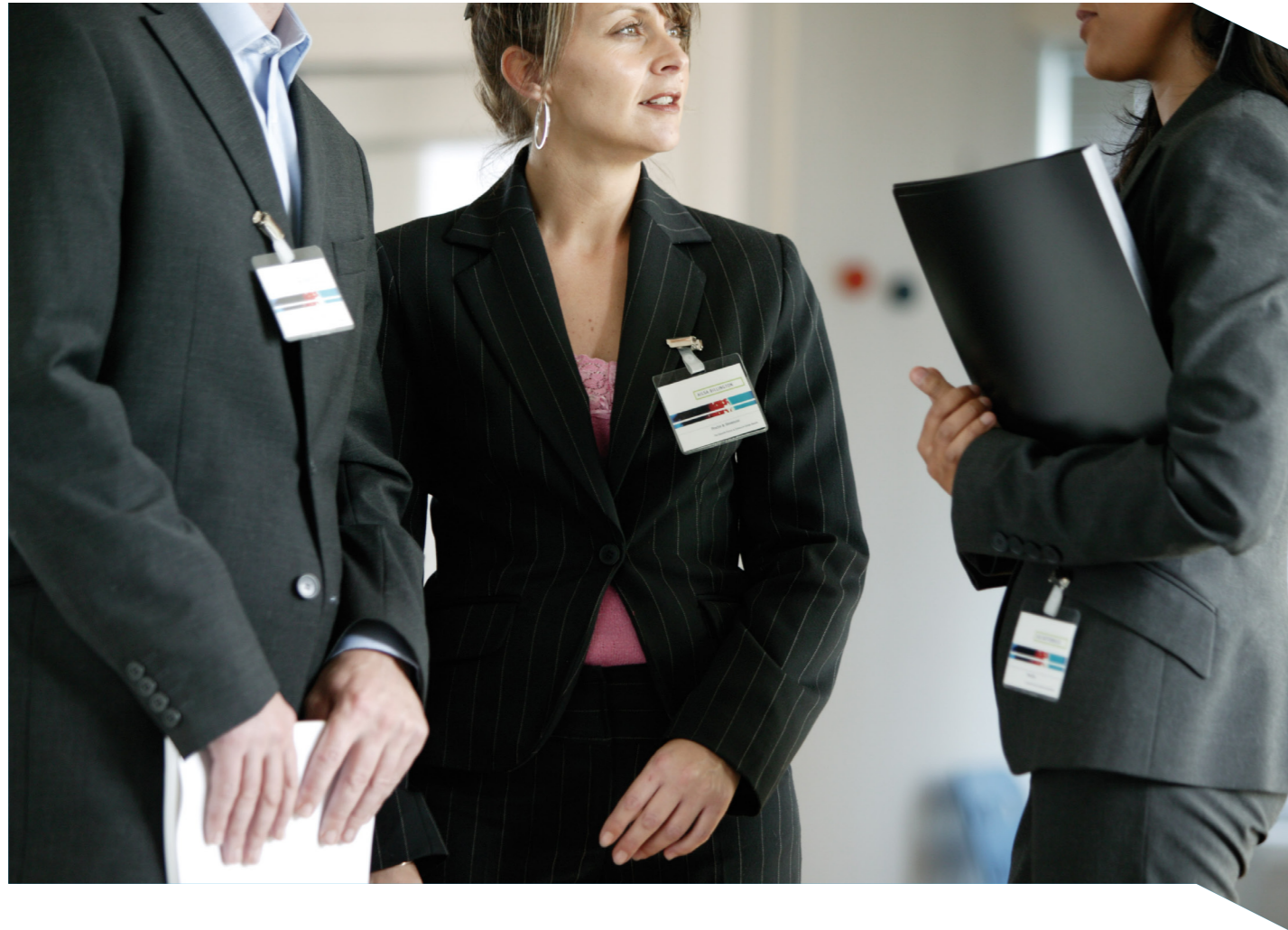
## Connectivity

- › Plymouth has good broadband connection and is in the top 10 locations in the country for Superfast Broadband
- › A healthy supplier marketplace to make cutting edge connectivity competitive
- › Plymouth has high take up of broadband and a skilled workforce with high levels of IT skills
- › A world class data centre facility is being developed in Plymouth through a private/public consortium
- › Digital Plymouth is committed to maintaining Plymouth's leading digital position

## Land Registry

- › A government department created in 1862 to register the ownership of land and property in England and Wales
- › We keep and maintain the Land Registry, where more than 23 million titles - the evidence of ownership - are documented
- › Our vision is to put the customer, quality and innovation at the heart of land registration services





## Sector Overview

A variety of services provided to businesses, including banking, insurance, accountancy, legal, consultancy, commercial property, recruitment, machinery rental, computing, security and cleaning services.

### Sector figures

- Total employment (2011)**
  - > 7,300 employees (7% of city total) rising to 9,800 in TTWA
- Economic contribution (2009)**
  - > Approx. GVA: £540m (14% of economy)

### Plymouth Overview

- > Population (2011) 256,400
- > Employees (2011) 102,600 (139,100 TTWA)
- > GVA (2009) £4,327m
- > Businesses (2011) 5,870

### Median gross weekly wage (2012)

- > Plymouth £454.4
- > UK £505.9

## > What now

To find out more information about what Plymouth offers the business services sector, or to discuss how our business support service can help meet your business needs, please contact:

**Economic Development Team**  
T +44-1752 305452 E [invest@plymouth.gov.uk](mailto:invest@plymouth.gov.uk)  
W [plymouth.gov.uk/economicdevelopment](http://plymouth.gov.uk/economicdevelopment) or [positivelyplymouth.com](http://positivelyplymouth.com)